

1:20,000 RECONNAISSANCE FISH AND FISH HABITAT INVENTORY  
TRIBUTARY TO NANIKA RIVER  
460-600600-64400-21800-  
UPPER MORICE RIVER PLANNING AREA  
FISHERIES / INTERPRETIVE MAP  
NORTHWOOD PULP AND TIMBER  
MORICE FOREST DISTRICT  
1999  
MAPSHEET# 093E094 Map 12 of 15

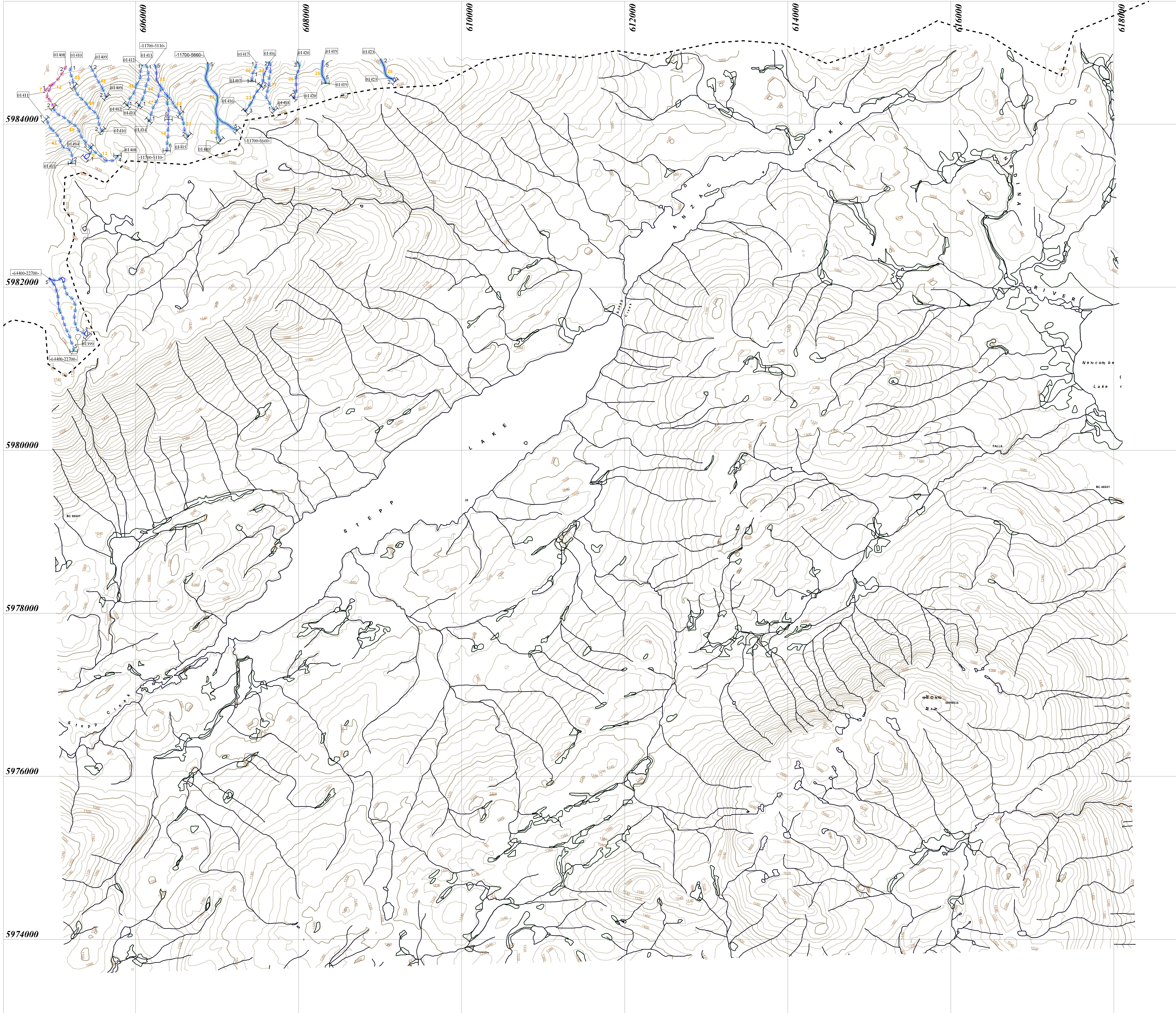
100000002000Meters

Scale 1:20,000  
Contour Interval (20m) Projection UTM

Date: 2000/03/24 (yyyy/mm/dd)

Company: EL of TRITON Environmental Consultants Ltd.

N  
W  
E  
S



STREAM REACH SUMMARY

12345 Interm Locational Point (ILP)  
123-123456-12345 Watershed Code

18 Reach Gradient  
Sample Site ID  
Sample Site  
Stream Reach Boundary

15 Watershed Code  
Waterbody Identifier

Reach Summary Symbol  
Fish Code(s)  
CO DV RB  
2 - 12 | S2 +

Channel Properties  
Gradient  
Channel Width  
Stream Classification

Lake Summary Symbol  
Lake (L) or Wetland (W)  
Surface Area  
Maximum Depth  
pH  
Conductivity  
TDS  
Lateral Area  
L - 175 - 8.0 - 6.8 - 29 - 20 - 15  
CSU NFC NSC PCC RSC RB WSU  
Fish Code(s)

Obstructions  
Beaver Dam  
Culvert  
Falls  
Persistent Debris Accumulation  
Dam

Features  
Eroded Bank  
Alluvial Fan  
Colluvial Fan  
Talus Cone  
Rock Outcrop  
Slumping Bank  
Slump  
Bedrock - confined  
Landslide Debris  
Landslide Area  
Boulder Garden  
Braided Stream  
Rapids  
Wetland / Marsh  
Subsurface Flow  
Tributary  
Dewatered Section  
Side Channel

Enhancement / Management Activities  
Fisheries Sensitive Zone

WSC Information  
12AB123 Hydrometric station

Stream Classification  
Fish Present (Confirmed)  
Fish Not Present (Confirmed)  
No Visible Channel  
Fish Present (Inferred)  
Fish Not Present (Inferred)

TRIM Base Map Anomalies  
Field-Identified Stream

Base Map Features  
River / Stream  
River / Stream - intermittent  
River / Stream - indefinite  
Lake  
Lake - intermittent  
Lake - indefinite  
Marsh  
Swamp  
Glacier  
Icefield  
Sand / Gravel Bar  
Island  
Road - loose surface  
Road - rough surface  
Index Contour  
Index Contour - indefinite  
Project Boundary

NOTE: Gradients were calculated from TRIM maps during planning Phase 1 2 3 of this project

FISH SPECIES		
Present		
CODE	DESCRIPTION	
NPC	No Fish Caught	
NS	Not Sampled	
BB	Barbot	
BT	Bull Trout	
CAL	Cossette Sculpin	
CAS	Crack Sculpin	
CH	Chinook Salmon	
CO	Coho Salmon	
CSU	Longnose Sucker	
CT	Cutthroat Trout	
DV	Dolly Varden	
L	Lamprey	
LKC	Lake Chub	
Present		
CODE	DESCRIPTION	
LNC	Longnose Dace	
LSU	Longnose Sucker	
LT	Lake Trout	
LW	Lake Whitefish	
MW	Morone Whitefish	
PCV	Pacific Chinook	
PL	Pacific Lamprey	
RB	Rainbow Trout	
RSC	Rainbow Sucker	
SK	Sockeye Salmon	
ST	Steelhead	
SU	Sucker	
WSU	White Sucker	
Historical		
CODE	DESCRIPTION	
Y	End of Fish Use/No Fish Use	
Y	Fish Presence - Salmon	
Y	Fish Presence - Sport	
Y	Fish Presence - Regionally Significant	
Y	Fish Presence - Other	
Y	Fish Observation - Salmon	
Y	Fish Observation - Sport	
Y	Fish Observation - Regionally Significant	
Y	Fish Observation - Other	
Y	Fish Spawning Limit - Salmon	

Source: MELP

PROJECT STUDY AREA BOUNDARY

"This product has been accepted as being in accordance with approved standards within the limits of Ministry quality assurance procedures. Users are cautioned that interpreted information on this product developed for the purposes of the Forest Practices Code Act and Regulations for example stream classifications, is subject to review by a statutory decision maker for the purposes of determining whether or not to approve an operational plan."

INVENTORY SOURCE INFORMATION CODES							
CODE	DESCRIPTION	CODE	DESCRIPTION	CODE	DESCRIPTION		
BASE	Base Map	LE SYM	Lake Symbol	APP	Aerial Photography	INVTMGNT	Group persons resp for conducting inventory
TRIM	1:20,000 TRIM Maps	INV	Field Inventory	VID	Video		
NTS	1:50,000 NTS Maps	SS	Summary	VPC	Video, Corrected	FISH	Fish Information
OTH	Other Map Source	N/A	Not Applicable	OTI	Other	INVD	Detailed Field Inventory
STR SYM	Stream Symbol	OTI	Other	INVS	General Field Inventory	MOF	Ministry of Forests
INV	Field Inventory	LOC	Location Information	INV	Field Inventory	GSC	Geological Survey of Canada
SS	Summary	PDE	Field Estimate	SS	Summary	OTH	Other
N/A	Not Applicable	PDG	Field GPS	N/A	Not Applicable		
OTH	Other	APR	Aerial Photo Estimate	OTH	Other		

FOREST PRACTICES CODE RIPARIAN CLASSES (STREAM CLASSIFICATION)				
Riparian Class	Average Channel Width (m)	Reserve Zone Width (m)	Management Zone Width (m)	Total RMA Width (m)
S1 Large River	> 100	0	100	100
S2 Large River	> 20	0	20	20
S3	> 5 < 20	10	20	50
S4	1.5 < 5	20	30	40
S5	< 1.5	0	30	30
S6	< 3	0	30	30

BASE MAP INFORMATION

Projection: UTM

Datum: NAD83

UTM Zone: 9

INVENTORY SOURCE INFORMATION

BASE: TRIM

LOC: FDG

HAB: INV

DATE INV: 1998/08/23

STR SYM: INV

LK SYM: N/A

FISH: INV

INV MGNT: MELP